

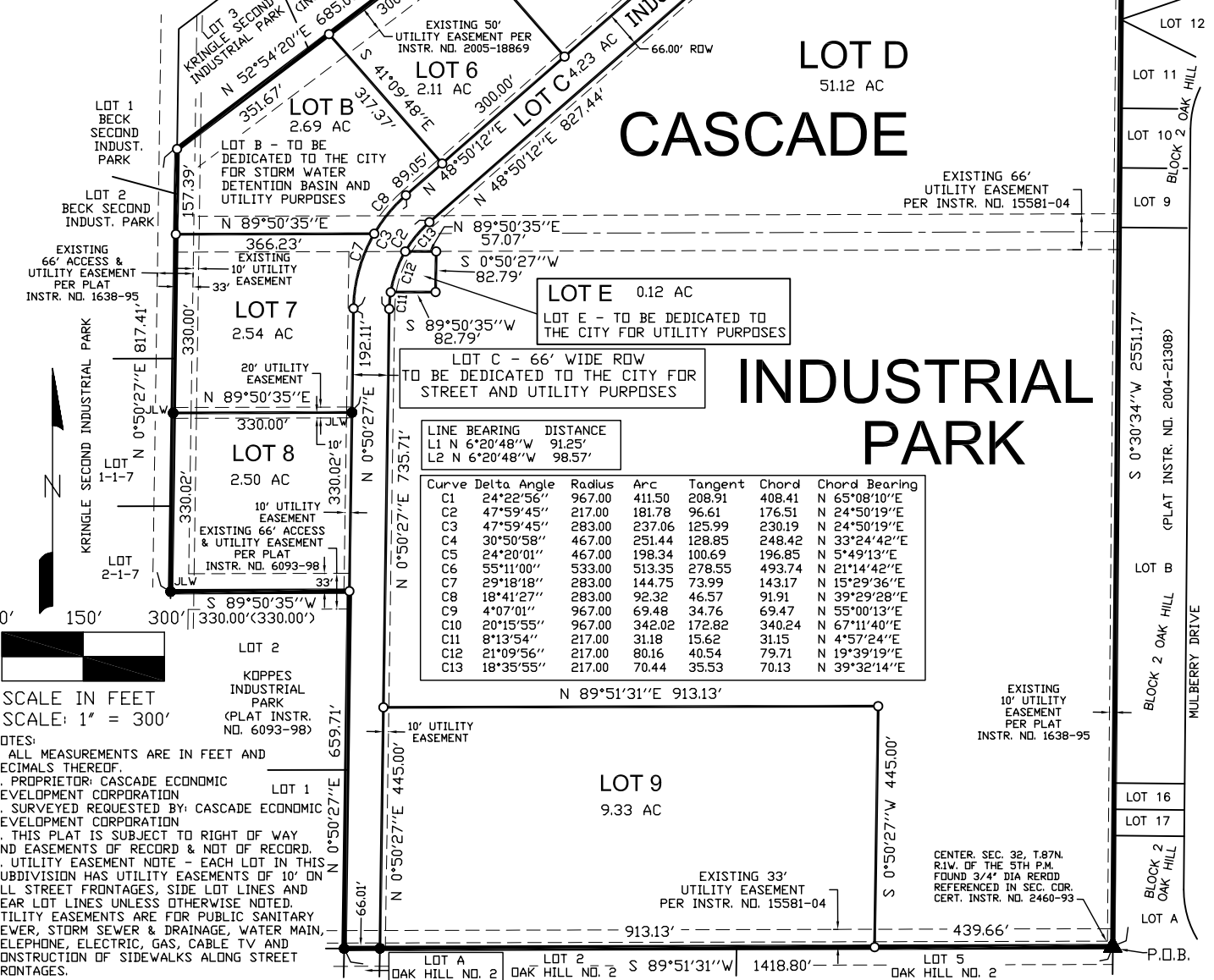
Final Plat of Cascade Industrial Park in the City of Cascade, Iowa

N 1/4, SEC. 32, T.87N.
R.1W. OF THE 5TH P.M.
FOUND CONCRETE
MONUMENT W/1/2" REROD

NOTE: THIS PLAT IS COMPRISED OF LOT A OF 1ST AVENUE EAST RECORDED AS INSTRUMENT NO. 2006-0513 OF THE DUBUQUE COUNTY RECORDER'S OFFICE AND LOT 3, LOT 4, LOT 5 & LOT A OF KOPPES INDUSTRIAL PARK RECORDED AS INSTRUMENT NO. 6093-98 OF THE DUBUQUE COUNTY RECORDER'S OFFICE ALL IN THE CITY OF CASCADE, IOWA

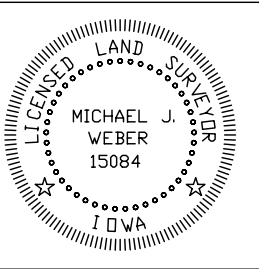
LEGEND

- ▲ UNITED STATES PUBLIC LAND CORNER DESCRIPTION AS NOTED
- PLACED 5/8" STEEL REROD W/DORANGE PLASTIC CAP MARKED "WEBER PLS 15084"
- FOUND 5/8" STEEL REROD W/DORANGE PLASTIC CAP MARKED "WEBER PLS 15084" UNLESS OTHERWISE NOTED
- FOUND 5/8" STEEL REROD W/YELLOW MARKED "JLW 4016"
- FOUND 1/2" DIA REROD W/YELLOW CAP NO. 12642
- BOUNDARY OF CASCADE INDUSTRIAL PARK
- - - NEW LOT LINES THIS PLAT
- - - UTILITY EASEMENT LINE
- - - EXISTING PARCEL LINE
- () RECORDED DIMENSION
- P.O.B. POINT OF BEGINNING
- AC ACRES
- ROW RIGHT OF WAY



SCALE IN FEET
SCALE: 1" = 300'

NOTES:
1. ALL MEASUREMENTS ARE IN FEET AND DECIMALS THEREOF.
2. PROPRIETOR: CASCADE ECONOMIC DEVELOPMENT CORPORATION
3. SURVEYED REQUESTED BY: CASCADE ECONOMIC DEVELOPMENT CORPORATION
4. THIS PLAT IS SUBJECT TO RIGHT OF WAY AND EASEMENTS OF RECORD & NOT OF RECORD.
5. UTILITY EASEMENT NOTE - EACH LOT IN THIS SUBDIVISION HAS UTILITY EASEMENTS OF 10' ON ALL STREET FRONTS, SIDE LOT LINES AND REAR LOT LINES UNLESS OTHERWISE NOTED. UTILITY EASEMENTS ARE FOR PUBLIC SANITARY SEWER, STORM SEWER & DRAINAGE, WATER MAIN, TELEPHONE, ELECTRIC, GAS, CABLE TV AND CONSTRUCTION OF SIDEWALKS ALONG STREET FRONTS.



I HEREBY CERTIFY THAT THIS LAND SURVEYING DOCUMENT WAS PREPARED AND THE RELATED SURVEY WORK WAS PERFORMED BY ME OR UNDER MY DIRECT PERSONAL SUPERVISION AND THAT I AM A DULY LICENSED LAND SURVEYOR UNDER THE LAWS OF THE STATE OF IOWA.

MICHAEL J. WEBER (DATE)
LICENSE NUMBER 15084
MY LICENSE RENEWAL DATE IS DECEMBER 31, 2007

SHEETS COVERED BY THIS SEAL :

WEBER SURVEYING, LLC
26789 46TH AVE
BERNARD, IA 52032
PH: (563) 879-4173
FAX: (563) 879-4199

PLOT DATE: 8/23/07
SURVEY DATE: 11/30/06
DWG. NAME: CEDC-PP

SHEET 1 OF 3